

# SEALED SEAM INSPECTION OF PHARMACEUTICAL PACKAGING

## MAIN FEATURES

- In-line inspection
- Check for presence of sealed seam
- Detection of sealed seam disruptions
- Search for product, edges, dirt and air inclusions
- Measurement of sealed seam width and position
- Detection of splice connections
- Position verification of the product

## BASIC CONFIGURATION

- Monochrome or colour line scan camera with up to 16.384 pixels
- Robust LED lighting with high lifetime
- Industrial processing unit
- Control and visualisation via touchscreen
- Customised interfaces (digital I/O, Profibus, Profinet, etc.)

## YOUR BENEFIT

During the production process of sealing seams several defects caused by material variations or mishandling may appear. This can lead to reduced functionality or degraded visual appearance of the product.

With the integration of a sealed seam inspection system you gain the ability of sorting out inaccurate products resulting in higher product quality and hence in reaching a higher level of customer satisfaction.

## COOPERATION

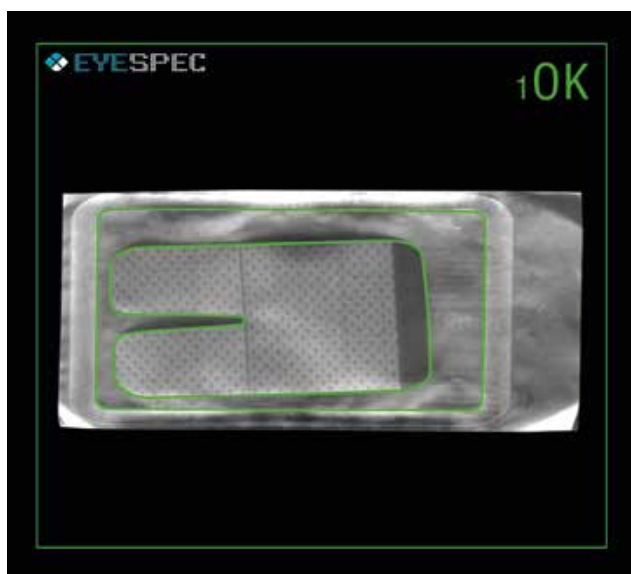


Keyence is a manufacturer of innovative high quality devices in the field of sensors and vision systems. Our strong and proven partnership with Keyence enables us to maximise the performance of our systems.

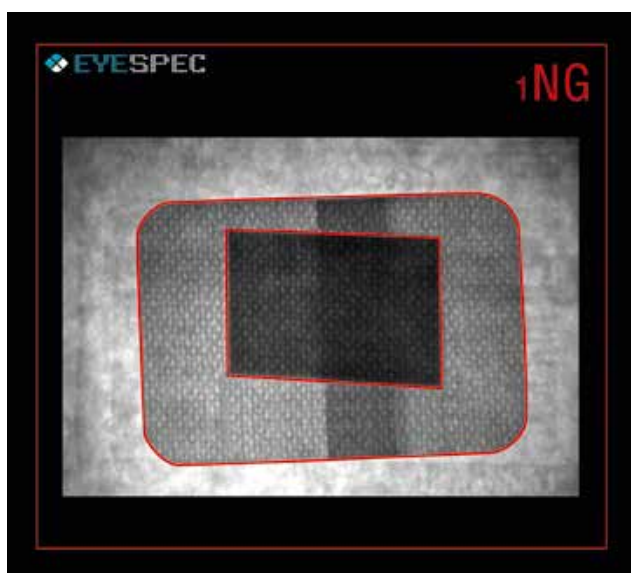


## SEALED SEAM INSPECTION OF PHARMACEUTICAL PACKAGING

### RESULT VISUALISATION



Sealed seam and product without defects



Product with defects

### SYSTEM SPECIFICATION

- Minimum defect size: down to 0,02mm x 0,02mm\*
- Product width/length: 20mm to 500mm
- Maximum throughput: 400 pieces/minute
- Maximum velocity: 1,5m/s
- Teach-In functionality for new products

### OPTIONS

- Control cabinet including touchscreen
- Mechanical sorting out unit
- Housings for cameras and illumination
- IP protection class up to IP67
- Additional features  
(check for 2D/3D-code, batch no., dates, etc.)

### SERVICE AND SUPPORT

- Customised conception and design of the system
- Integration into existing production process
- Remote service and maintenance

\*depending on the product



EYESPEC GmbH  
Runholtstraße 9  
25746 Heide

TEL +49 (0) 481.12 610.100  
FAX +49 (0) 481.12 610.126

www.eyespec.de  
info@eyespec.de